



PARADISE DATACOM APPLICATION NOTE

EXTRACTING MODEM CONFIGURATIONS

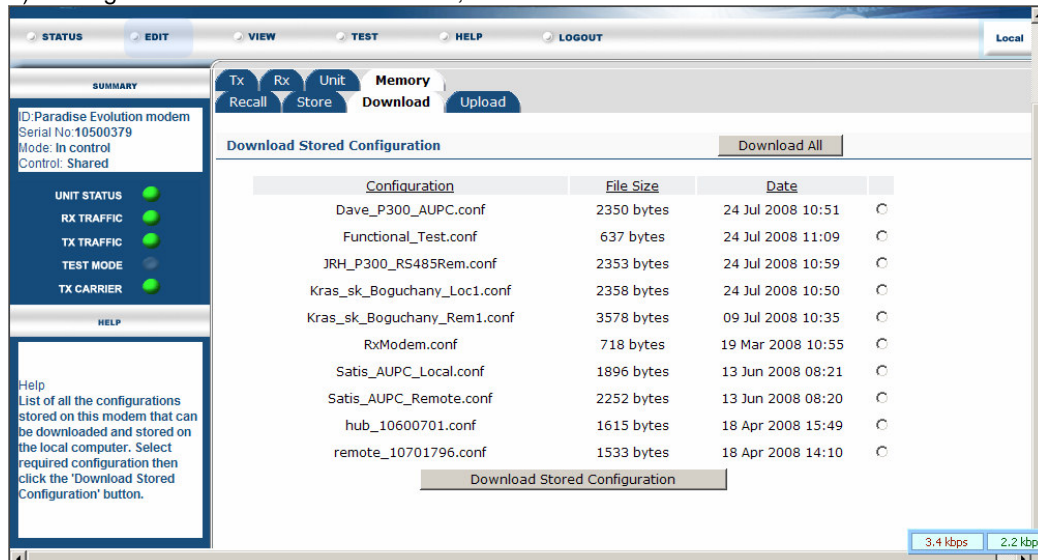
EVO_AN_013

Summary

This procedure describes how to store, download and upload Modem configurations via the built in web server. (Web User Interface – WUI).

Method

- 1) Select [Main][Edit][Memories][Store] and enter a name for your configuration. <filename> [Enter].
- 2) Connect Laptop/PC via the RJ45 M&C with a Straight RJ45 Ethernet Cable.
- 3) Configure the PC/Laptop to be on the same Subnet as the Modem (Factory Default IP Address 10.0.70.1, Subnet 255.255.0.0).
- 4) Ensure that the Laptop/PC has the latest version of JAVA Runtime Environment, available from; <http://www.java.com/en/download/index.jsp>
- 5) Login to Web User Interface (WUI) using Internet Explorer using the Modem's IP Address, with User : admin, Password: paradise
- 6) Navigate to the screen shown below;



WUI Downloads screen

- 7) Select <filename> by clicking on the radio button on the Right Hand Side of the screen.
- 8) Click on “**Download Stored Configuration**” and Save the filename to Laptop/PC.
- 9) Similarly to `Upload` a previously saved configuration, please select Edit > memory > Upload and navigate to where the configuration is stored. Save to the Modem. Please note this has to be a .conf file.