

# **PARADISE DATACOM APPLICATION NOTE**

## **IP TRAFFIC CARD SOFTWARE UPGRADE PROCEDURE**

**EVO\_AN\_021**

## **Summary.**

This procedure guides the user through loading the latest IP traffic card software to the modem's P3714 IP Traffic Card.

## **Method.**

Download the latest IP Traffic Card software from the Paradise FTP site:

<ftp://ftp.paradise.chunkyftp.net/Evolution/Latest/IP%20Traffic%20Card/>

Note that the same IP Traffic Card software is used on all series of Paradise modems.

Configure the modem M&C and IP traffic ports to be on the same subnet and ensure that the *Bridge M&C* option is set to *ON* under the *Terrestrial interface type* selection.

To access the modem web user interface you should first enter an IP address into the front panel menu: [Main]/[Edit]/[Unit]/[M&C]/[IP address] and [subnet mask]. To enter the Traffic Port IP addresses: [Main]/[Edit]/[Unit]/[Interface]/[IP] scroll to IP address and subnet mask entry fields using the *Enter* key. Then connect a PC to the M&C Ethernet interface using a straight CAT5E cable. The modem should have an IP address and subnet mask within the same subnet range as your PC. Simply enter the modem IP address in to the browser address bar and the interface will appear.

A login is required on the modem interface. The default user name is *admin* and the password is *paradise*.

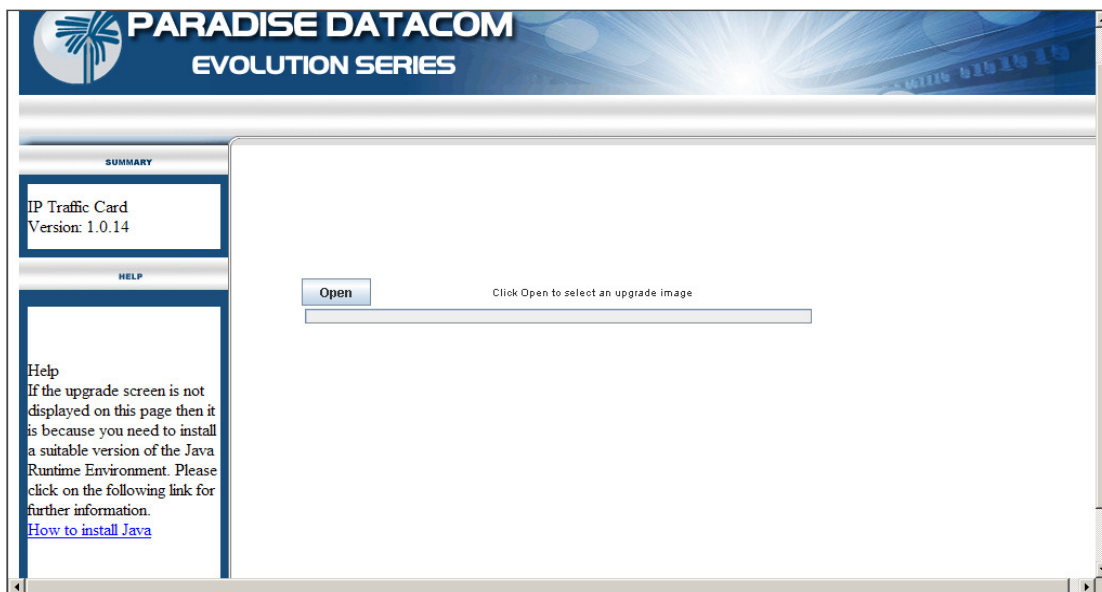
You may have to change the modem from *Local* control to *Takeaway* to allow PC control of the modem via the web user interface to facilitate the software download. On the modem keypad select: [Main]/[Edit]/[Unit]/[M&C]/Control.

The PC will require the latest Java Runtime Environment (a free download from 'Sun Microsystems')

Navigate to the Edit/Unit/Upgrade screen on base modem:



Open a second web user interface session using the IP Traffic Card address after connecting an additional IP cable between the second base modem IP port and an RJ45 connector on the IP Traffic Card; this can be either a crossover or straight, as the IP Traffic Card is auto sensing. Keep both web sessions open.



**IMPORTANT NOTE:** If current software is prior to V1.0.13, then load V1.0.13 Kernel.zip and reboot the modem prior to upgrading to V1.0.13 or later!

Using the *Upgrade Page*, load the new software into the IP Traffic Card by selecting *Open* and navigating to where the software is saved on your PC.

Paradise Datacom Limited  
 1 Wheaton Road, Witham, Essex, CM8 3TD, England  
 Telephone +44 (0)1376 515 636; Facsimile +44 (0)1376 533 764  
 E-mail [support@paradise.co.uk](mailto:support@paradise.co.uk)  
[www.paradisedata.com](http://www.paradisedata.com)

Paradise Datacom LLC  
 328 Innovation Blvd., State College, PA 16803, U.S.A.  
 Telephone +1 814 238 3450; Facsimile +1 814 238 3829  
 E-mail [sales@paradisedata.com](mailto:sales@paradisedata.com)  
[www.paradisedata.com](http://www.paradisedata.com)  
 4 March 2009