

Description

The RF18 Series Ka-Band LNA offers premium performance and reliability in the most versatile package available.

The latest technology in GaAs HEMT devices produces the lowest possible noise temperatures in an un-cooled LNA. System performance is enhanced by outstanding gain stability and gain flatness.

In addition, the RF18 Series LNA is backed by a 36-month warranty and by more than 30 years experience in the design of high performance communications amplifiers.

The performance of the RF18 Series LNA is matched by a full range of features chosen with the communication system designer in mind.

From the compact weatherproof housing to the standard combination of RF cable and circular connector DC input, the RF18 Series LNA is ready for integration into your system.

FEATURES

- Noise Temperatures as low as 140K
- 36-Month Warranty
- Input and Output Isolators
- +12 to +28 VDC Operation
- Waterproof, Painted Aluminum Housing
- Reverse Voltage Protection
- Pressurizable Feed

OPTIONS

- Fault Alarm (Current Sensing)
- Universal AC Power Supply
- Internal Bias Tee

CONFIGURATIONS

- 1:1 Redundant LNA System
- 1:2 Redundant LNA System

ENVIRONMENTAL

- Operating Temperature: -40 to +70 °C
- 100% Relative Humidity, Condensing

ELECTRICAL SPECIFICATIONS

PARAMETER	NOTES	LIMITS	UNITS
Frequency Range		18.300 to 20.200	GHz
Noise Temperature	(See configuration matrix)	140 to 200	K @ +23 °C ambient
Gain Gain Flatness Gain Slope Gain Stability vs. Time	Full band Per 40 MHz	55 (min.) ±1.00 (max.) ±0.20 (max.) ±0.10 (max.) ±0.20 (max.) ±0.20 (max.)	dB dB dB/40 MHz dB/hour dB/24 hours dB/month
Output Power @ 1dB Gain Compression (P _{1dB})		+8 (min.)	dBm
Output Third Order Intercept Point	Measured with two tone input; each tone @ -65 dBm input	+16 (min.)	dBm
Input VSWR Output VSWR		1.30:1 (max.) 1.50:1 (max.)	
Input Overdrive		0	dBm CW
Group Delay Linear Parabolic Ripple	Per 40 MHz	0.01 (max.) 0.001 (max.) 0.1 (max.)	ns/MHz ns/MHz ² ns peak-to-peak
AM/PM Conversion	@ -10 dBm output power	0.03 (max.)	°/dB
Primary Power Voltage Current, typical	(see configuration matrix for options)	+12 to +28 180	VDC mA

MECHANICAL SPECIFICATIONS

Weight		0.4 (0.2)	lbs. (kg)
Finish		Paint	White; epoxy enamel
Feed Pressure		2	PSI
Connectors	RF Input RF Output (standard) DC Voltage	WR42 Waveguide ¹ SMA 6-pin MS ²	Cover flange Female MS3112E10-6P

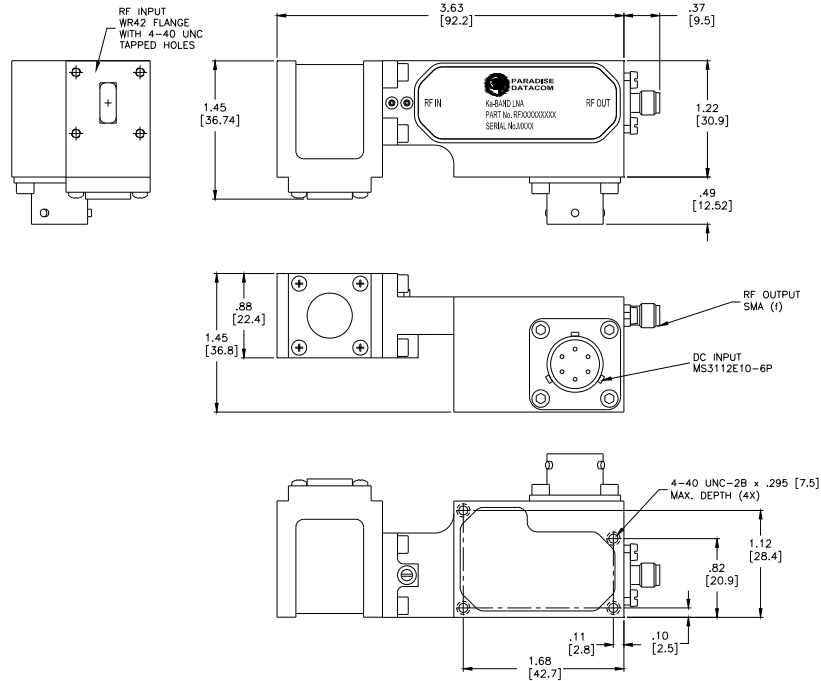
¹ Use supplied full (for mating with a grooved flange) or half (for mating with a flat flange) gasket to ensure a weatherproof seal.

² Cover connectors with electrical putty or tape to ensure a weatherproof seal.

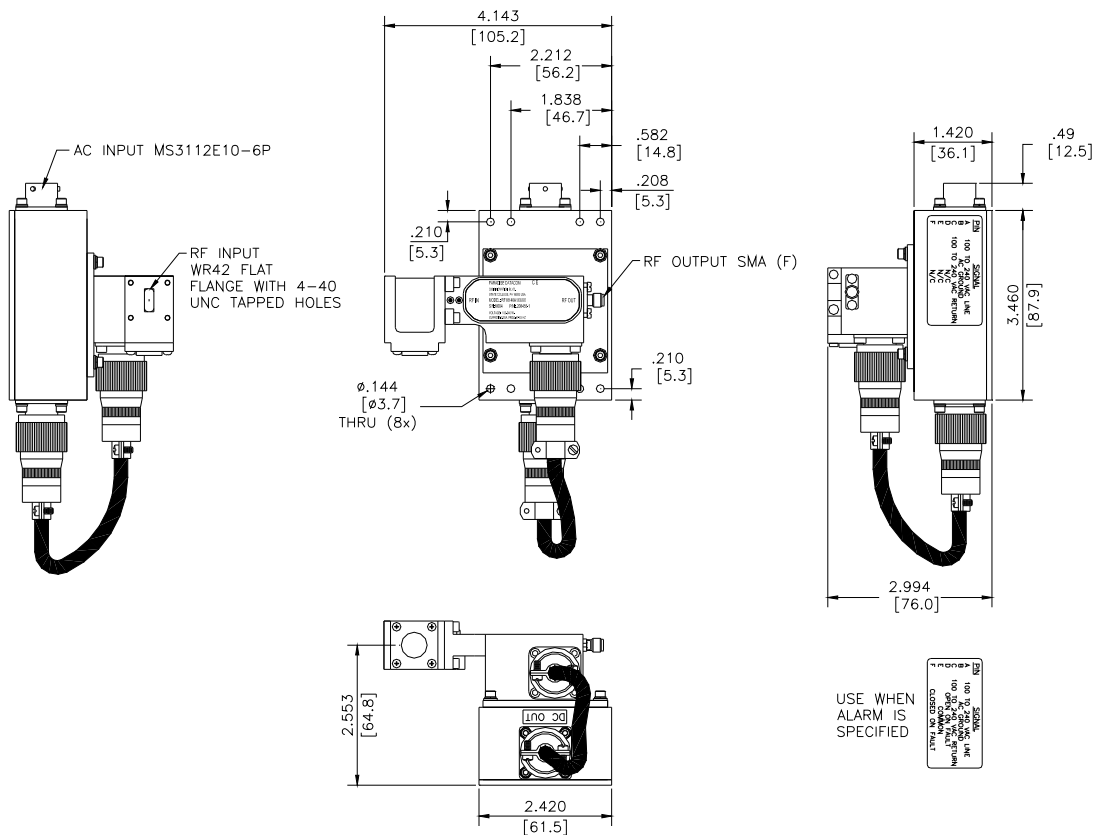
ENVIRONMENTAL SPECIFICATIONS

Operating Temperature	Ambient	-40 to +70	°C
Storage Temperature	Ambient	-40 to +70	°C
Relative Humidity	Condensing	100	%

OUTLINE DRAWING



OUTLINE DRAWING, AC INPUT OPTION, A1



PRIME POWER / ALARM INTERFACE (MS311E10-6P)

PIN	STANDARD
A	+12 to +28 VDC
B	GROUND
C	GROUND
D	OPEN ON FAULT
E	COMMON
F	CLOSED ON FAULT

TECHNICAL NOTES

Gain vs. Ambient Temperature Coefficient	-0.02 dB/°C																
Noise Temperature vs. Ambient Temperature	De-rate noise temperature by 1.0 K/°C for ambient temperatures over +23 °C																
Noise Temperature to Noise Figure Conversion	$10 \times \log \left(\frac{T_{noise}(K)}{T_{ref}(K)} + 1 \right) \text{ where } T_{ref}(K) = 290(K)$ <table border="1" data-bbox="899 1014 1341 1331"> <thead> <tr> <th>Noise Temp. (K)</th> <th>Noise Figure (dB)</th> </tr> </thead> <tbody> <tr> <td>140</td> <td>1.71</td> </tr> <tr> <td>150</td> <td>1.81</td> </tr> <tr> <td>160</td> <td>1.91</td> </tr> <tr> <td>170</td> <td>2.00</td> </tr> <tr> <td>180</td> <td>2.10</td> </tr> <tr> <td>190</td> <td>2.19</td> </tr> <tr> <td>200</td> <td>2.28</td> </tr> </tbody> </table>	Noise Temp. (K)	Noise Figure (dB)	140	1.71	150	1.81	160	1.91	170	2.00	180	2.10	190	2.19	200	2.28
Noise Temp. (K)	Noise Figure (dB)																
140	1.71																
150	1.81																
160	1.91																
170	2.00																
180	2.10																
190	2.19																
200	2.28																

Ka-Band LNA Configurator

R	F	1	8								
---	---	---	---	--	--	--	--	--	--	--	--

Noise Temperature (K)
 140 150 160
 170 180 190
 200

Input Voltage
 XX - +15 to +20 VDC
 A1 - 100-240 VAC, 47-440 Hz

Special Notes
 XX - None
 CP¹ - Internal Bias Tee
 (Powered via Cable)
¹ Not available with A1 Input Voltage
 option

Fault Alarm
 XX - None
 F1 - Contact Closure (Dry form "C")

Use and Disclosure of Data — The items described herein are controlled by the U.S. Government and authorized for export only to the country of ultimate destination for use by the ultimate consignee or end-user(s) herein identified. They may not be resold, transferred, or otherwise disposed of, to any other country or to any person other than the authorized ultimate consignee or end-user(s), either in their original form or after being incorporated into other items, without first obtaining approval from the U.S. government or as otherwise authorized by U.S. law and regulations.

Proprietary and Confidential — The information contained in this document is the sole property of Teledyne Paradise Datacom. Any reproduction in part or as a whole without the written permission of Teledyne Paradise Datacom is prohibited.

Specifications are subject to change without notice.