



**INSTRUCTIONS FOR  
COMPUTERS RUNNING  
WINDOWS VISTA  
ONLY!**

See Drawing 206599  
for instructions for use with  
Windows XP

## IPNET QUICK START GUIDE (Universal M&C)



**By default, the vBUC™ will be in a muted state. You must short pin J to pin K on the M&C Port J4 to unmute the device. Pins J & K are shorted in the supplied Quick Start cable.**

### STEP 1 - Before Power Up:

1. Install the Paradise Datacom Universal M&C from the included CD onto a Windows-based PC.
2. Terminate the RF input and output!
3. If connected to a modem that is equipped with FSK, ensure FSK is turned off. (FSK will turn off IPNET communication)
4. Connect the Quick Start Cable to port J4 of vBUC™. This will force the vBUC™ into IPNET mode, with the default IP parameters (see Table 1 for details).
5. Connect other end of the Quick Start Cable to the network port of a PC.
6. Configure the PC's COM port properties as shown below. To access the COM port properties, go to *Start* → *Control Panel* and select the *Network and Sharing Center* icon. Click on the *Manage Network Connections* selection on the left side of the screen. Right-click on *Local Area Connection* (or the network connection used for communication) and select *Properties*. Select *Internet Protocol Version 4 (TCP/IPv4)* and click on the *Properties* button as shown in Figure 1. Configure as shown in Figure 2, then click the *OK* button and close out of all windows.

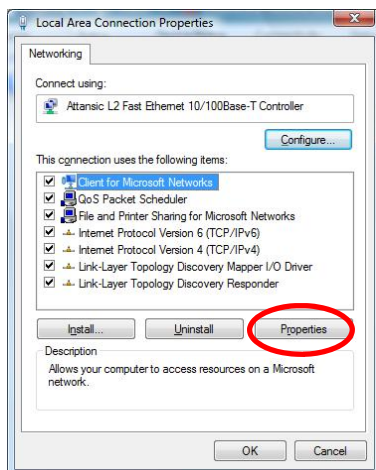


Figure 1. Local Area Connection Properties

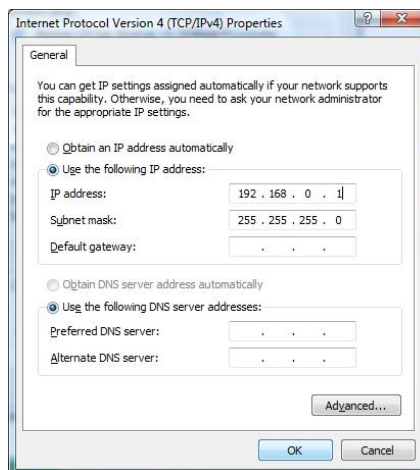


Figure 2. Internet Protocol Version 4 Properties

**Table 1: Default vBUC IP Parameters**

IP Parameter	Default Setting
IP Address	192.168.0.9
Gateway	192.168.0.1
Subnet Mask	255.255.255.0
Local Port	1007
IP Lock Address	255.255.255.255
Web Password	paradise

## STEP 2 - Power Up:

1. Apply power to the vBUC™.
2. Allow a few seconds for the PC and vBUC™ to establish connection.
3. If connection is successful, the LINK LED on the Network Port of the PC will be lit as seen in Figure 3.

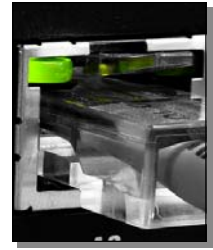


Figure 3. Network Port Link

## STEP 3 - Start Universal M&C:

1. Launch the Paradise Universal M&C program.
2. From the menu, select **Action** → **Add Unit** → **vBUC**. A new window will appear as shown in Figure 4.
3. Select Internet Connection
4. The default IP address of a vBUC™ is 192.168.0.9 Enter this address in the IP Address window. HostName is not required and the default Local Port of 1007 will work in most cases.
5. If the BUC Address is unknown, click the *Search for Unit* button (default address is 1).
6. If found, a new window will appear indicating the address as seen in Figure 5. By clicking *OK*, the BUC address will automatically update on the previous screen
7. Click the *Create* button to initiate the Monitor and Control software for this unit.
8. Click on the Carrier Enable button on the Status window to enable Transmit RF. See Figure 5.

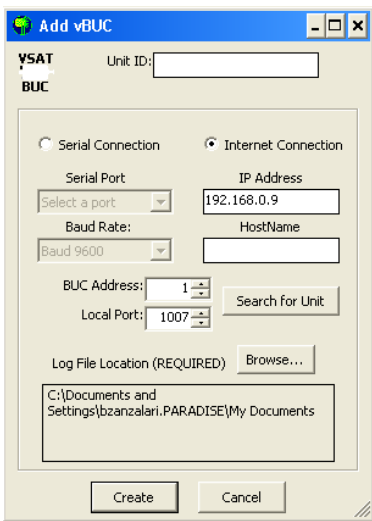


Figure 4. Add vBUC screen

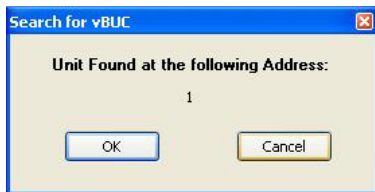


Figure 5. Search for vBUC

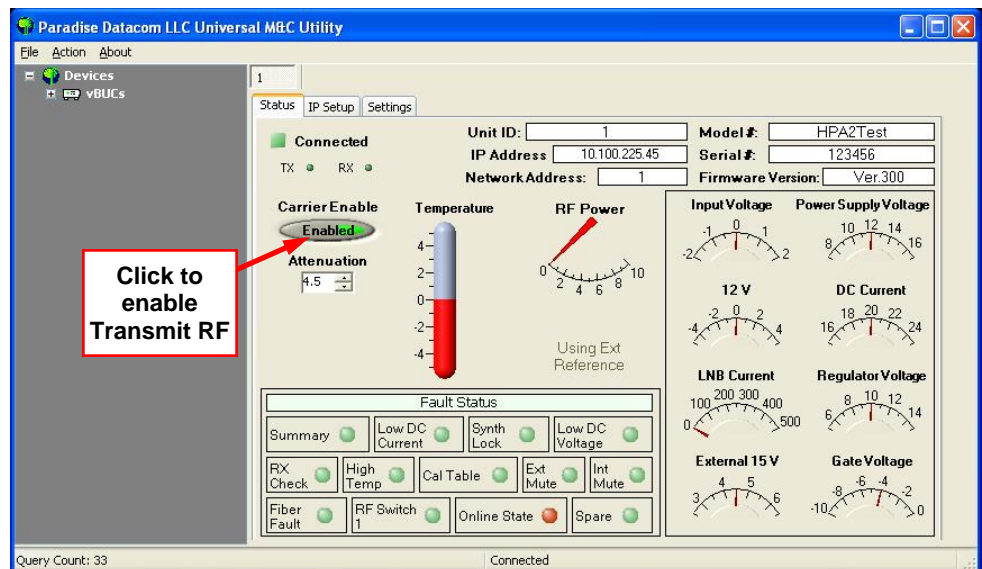


Figure 6. Click on Carrier Enable button to enable Transmit RF



**There are 4 different ways to communicate to the vBUC™; FSK, Serial, IPNET (IPNET includes Web Interface) and SNMPv2. If FSK is present on the IFL In port, all other communication on the M&C port will terminate. Upon removal of FSK, communication on the M&C port will resume.**