



**INSTRUCTIONS FOR
COMPUTERS RUNNING
WINDOWS VISTA
ONLY!**

**See Drawing 206600
for instructions for use with
Windows XP**

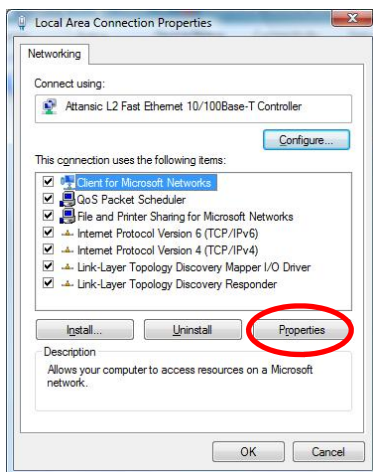
RS485 (2-WIRE) QUICK START GUIDE



By default, the vBUC™ will be in a mute state. You must short pin J to pin K on the M&C Port J4 to unmute the device. Pins J & K are shorted in the supplied Quick Start Cable.

STEP 1 - Before Power Up:

1. Install the Paradise Datacom Universal M&C from the included CD onto a Windows-based PC.
2. Terminate the RF input and output!
3. If connected to a modem that is equipped with FSK, ensure FSK is turned off. (FSK will turn off Serial communication)
4. Connect the Quick Start Cable to port J4 of vBUC™. This will force the vBUC™ into Serial mode (2-Wire RS485) with a fixed baud rate of 9600.
5. Connect other end of the Quick Start Cable to the PC's RS485 port. If the PC is not equipped with a RS485 port, a USB to RS485 converter is required. See Figure 4 for RS485 pin-out.
6. Configure the PC's COM port properties as shown below. To access the COM port properties, go to *Start* → *Control Panel* and select the *Network and Sharing Center* icon. Click on the *Manage Network Connections* selection on the left side of the screen. Right-click on *Local Area Connection* (or the network connection used for communication) and select *Properties*. Select *Internet Protocol Version 4 (TCP/IPv4)* and click on the *Properties* button as shown in Figure 1. Configure as shown in Figure 2, then click the *OK* button and close out of all windows.



◀ Figure 1.
Local Area
Connection
Properties

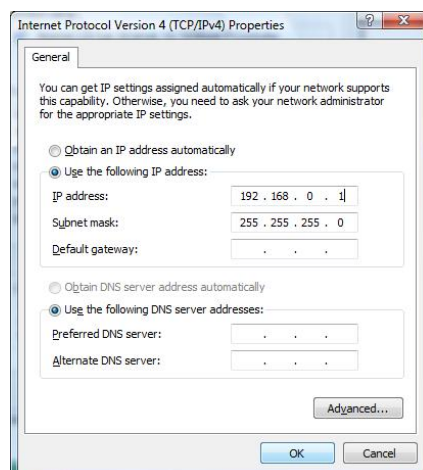


Figure 2. ▶
Internet
Protocol
Version 4
Properties

IP address:
192.168.0.1

Subnet Mask:
255.255.255.0

STEP 2 - Power Up:

1. Apply power to the vBUC™.
2. Allow a few seconds for the vBUC™ to initialize.

STEP 3 - Start Universal M&C:

1. Launch the Paradise Universal M&C program.
2. From the menu, select **Action -> Add Unit -> vBUC**. A new window will appear as shown in Figure 3.
3. Select Serial Connection
4. Choose the serial port that will be used for the communication.
5. If the BUC Address is unknown, click the *Search for Unit* button (default address is 1).
6. If found, a new window will appear indicating the address as seen in Figure 4. By clicking *OK*, the BUC address will automatically update on the previous screen
7. Click the *Create* button to initiate the Monitor and Control software for this unit.

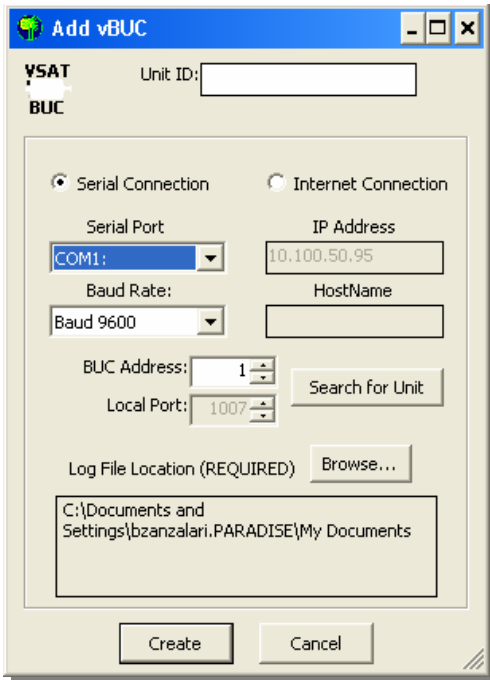


Figure 3. Add vBUC screen

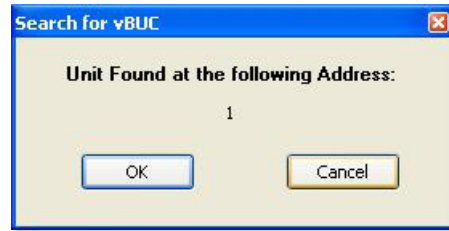


Figure 4. Search for vBUC screen

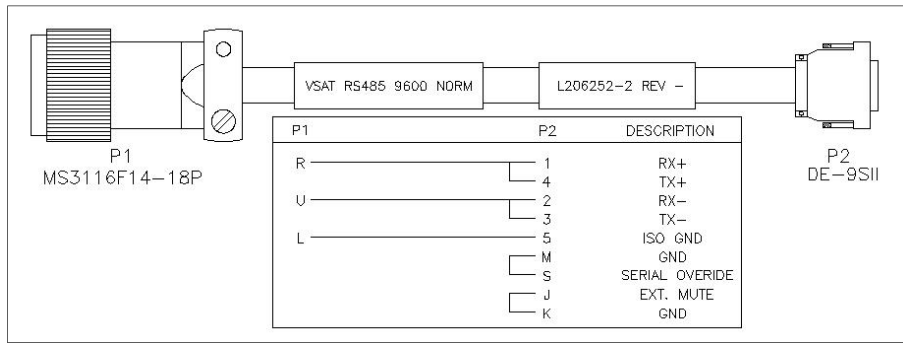


Figure 5. Quick Start Pin-out



There are 4 different ways to communicate to the vBUC™; FSK, Serial, IPNET (IPNET includes Web Interface) and SNMPv2. If FSK is present on the IFL In port, all other communication on the M&C port will terminate. Upon removal of FSK, communication on the M&C port will resume.