



**INSTRUCTIONS FOR
COMPUTERS RUNNING
WINDOWS VISTA
ONLY!**

See Drawing 206601
for instructions for use with
Windows XP

WEB INTERFACE QUICK START GUIDE



By default, the vBUC™ will be in a muted state. You must short pin J to pin K on the M&C Port J4 to unmute the device. Pins J & K are shorted in the supplied Quick Start cable.

STEP 1 - Before Power Up:

1. Install the latest version of Java™ onto a Windows-based PC. (<http://www.java.com/downloads>)
2. Terminate the RF input and output!
3. If connected to a modem that is equipped with FSK, ensure FSK is turned off. (FSK will turn off Web Interface communication)
4. Connect the Quick Start Cable to port J4 of the vBUC™. This will force the vBUC™ into Web Interface mode with the default IP parameters (see Table 1 for details).
5. Connect other end of the Quick Start Cable to the network port of a PC.
6. Configure the PC's COM port properties as shown below. To access the COM port properties, go to *Start* → *Control Panel* and select the *Network and Sharing Center* icon. Click on the *Manage Network Connections* selection on the left side of the screen. Right-click on *Local Area Connection* (or the network connection used for communication) and select *Properties*. Select *Internet Protocol Version 4 (TCP/IPv4)* and click on the *Properties* button as shown in Figure 1. Configure as shown in Figure 2, then click the *OK* button and close out of all windows.

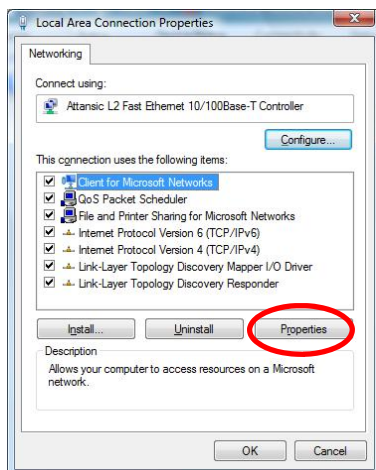


Figure 1. Local Area Connection Properties

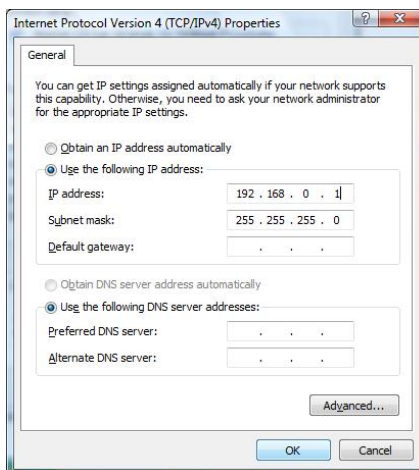


Figure 2. Internet Protocol Version 4 Properties

Table 1: Default vBUC IP Parameters

IP Parameter	Default Setting
IP Address	192.168.0.9
Gateway	192.168.0.1
Subnet Mask	255.255.255.0
Local Port	1007
IP Lock Address	255.255.255.255
Web Password	paradise

STEP 2 - Power Up:

1. Apply power to the vBUC™.
2. Allow a few seconds for the PC and vBUC™ to establish connection.
3. If connection is successful, the LINK LED on the Network Port of the PC will be lit as seen in Figure 3.

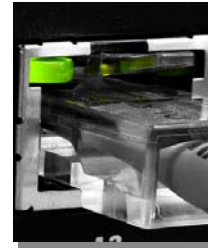
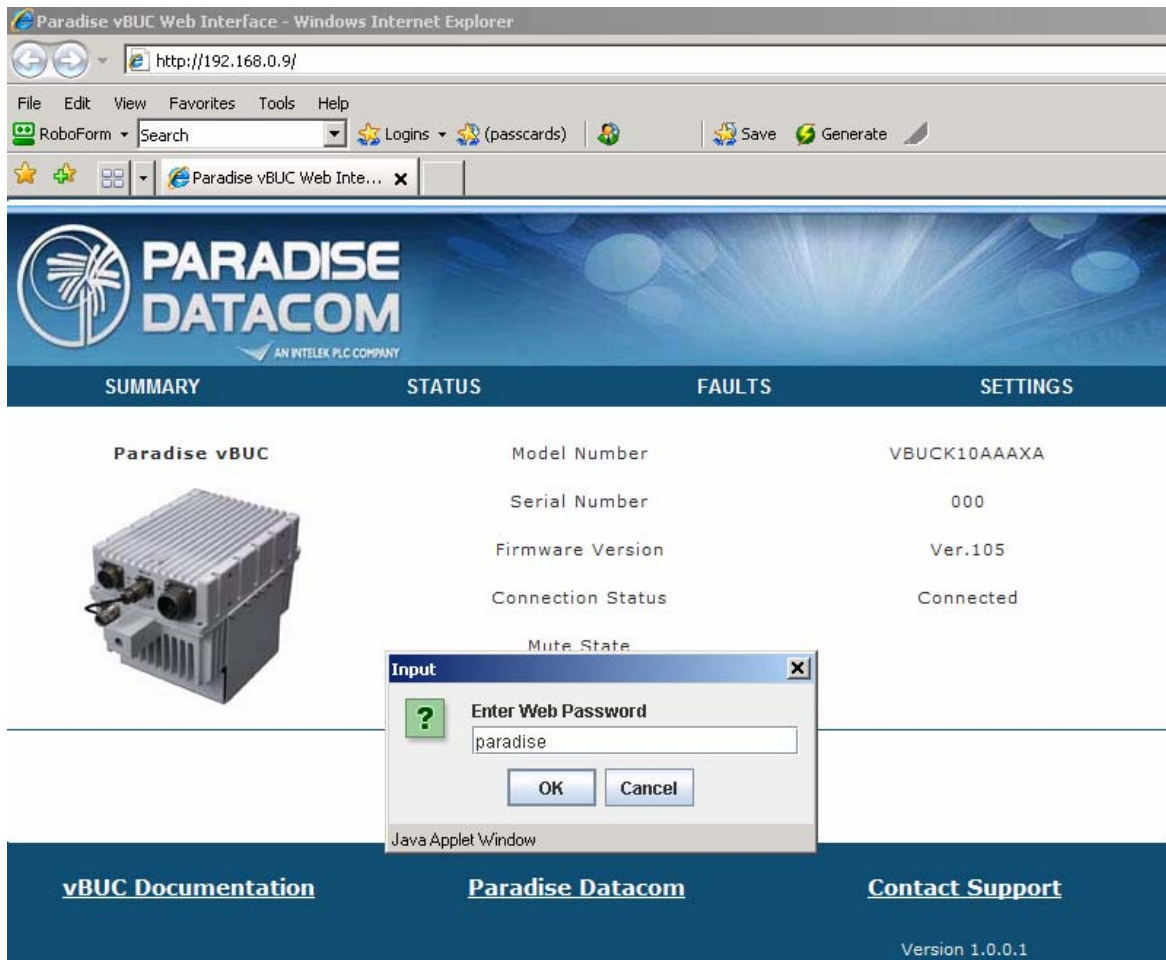


Figure 3. Network Port Link

STEP 3 - Start the Web Interface:

1. Launch Internet Explorer v7.0 or higher.
2. Type in the default IP address of 192.168.0.9 into the address bar as seen in Figure 4.
3. An input box will pop up prompting the user for a Web Password. The default Web Password is **paradise**.
4. Click the OK button to initiate the Monitor and Control software for this unit.




SUMMARY	STATUS	FAULTS	SETTINGS
	Model Number Serial Number Firmware Version Connection Status Mute State	VBUCK10AAAXA 000 Ver.105 Connected	

Figure 4. Initializing Web Interface



There are 4 different ways to communicate to the vBUC™; FSK, Serial, IPNET (IPNET includes Web Interface), and SNMPv2. If FSK is present on the IFL In port, all other communication on the M&C port will terminate. Upon removal of FSK, communication on the M&C port will resume.