



**INSTRUCTIONS FOR  
COMPUTERS RUNNING  
WINDOWS VISTA  
ONLY!**

See Drawing 206601  
for instructions for use with  
Windows XP

## WEB INTERFACE QUICK START GUIDE



**By default, the vBUC™ will be in a muted state. You must short pin J to pin K on the M&C Port J4 to unmute the device. Pins J & K are shorted in the supplied Quick Start cable.**

### STEP 1 - Before Power Up:

1. Install the latest version of Java™ onto a Windows-based PC. (<http://www.java.com/downloads>)
2. Terminate the RF input and output!
3. If connected to a modem that is equipped with FSK, ensure FSK is turned off. (FSK will turn off Web Interface communication)
4. Connect the Quick Start Cable to port J4 of the vBUC™. This will force the vBUC™ into Web Interface mode with the default IP parameters (see Table 1 for details).
5. Connect other end of the Quick Start Cable to the network port of a PC.
6. Configure the PC's COM port properties as shown below. To access the COM port properties, go to *Start* → *Control Panel* and select the *Network and Sharing Center* icon. Click on the *Manage Network Connections* selection on the left side of the screen. Right-click on *Local Area Connection* (or the network connection used for communication) and select *Properties*. Select *Internet Protocol Version 4 (TCP/IPv4)* and click on the *Properties* button as shown in Figure 1. Configure as shown in Figure 2, then click the *OK* button and close out of all windows.

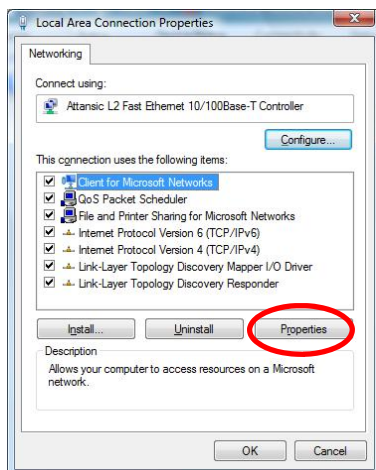


Figure 1. Local Area Connection Properties

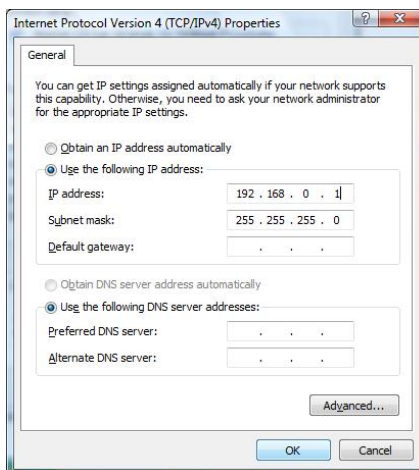


Figure 2. Internet Protocol Version 4 Properties

**Table 1: Default vBUC IP Parameters**

IP Parameter	Default Setting
IP Address	192.168.0.9
Gateway	192.168.0.1
Subnet Mask	255.255.255.0
Local Port	1007
IP Lock Address	255.255.255.255
Web Password	paradise

## STEP 2 - Power Up:

1. Apply power to the vBUC™.
2. Allow a few seconds for the PC and vBUC™ to establish connection.
3. If connection is successful, the LINK LED on the Network Port of the PC will be lit as seen in Figure 3.

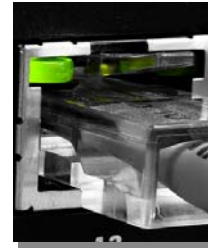


Figure 3. Network Port Link

## STEP 3 - Start the Web Interface:

1. Launch Internet Explorer v7.0 or higher.
2. Type in the default IP address of 192.168.0.9 into the address bar of your web browser.
3. A web page will open and launch the M&C application, as seen in Figure 4. The applet will automatically load in the browser window.
4. An input window will pop up prompting the user for a Web Password. The default Web Password is **paradise**. See Figure 5.
5. Click the **OK** button to initiate the java-based M&C application, shown in Figure 6.
6. Change the operating parameters in the Settings tab. For example, to enable Transmit RF, to go the Settings tab, click on the Mute Settings pull-down menu and select "Unmuted".



Figure 4: Loading M&C Applet

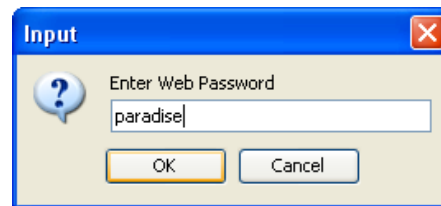
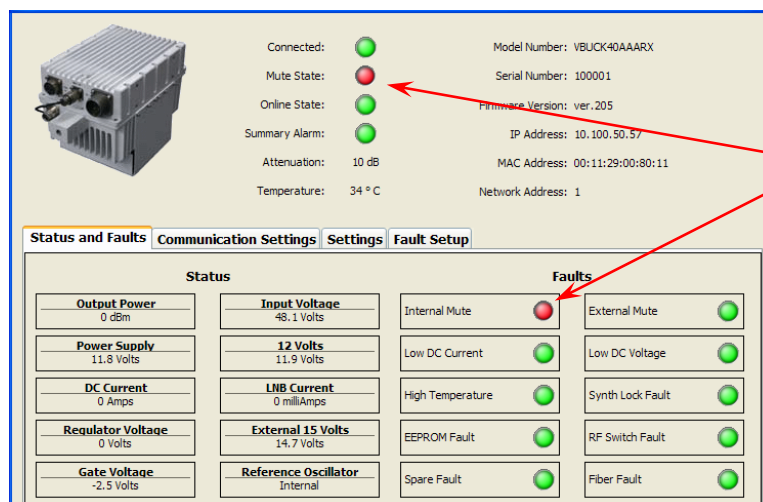


Figure 5: Enter Password (default = "paradise")



Note that the unit is initially muted. Change in Settings tab.

Figure 6: vBUC Java M&C Applet



There are 4 different ways to communicate to the vBUC™; FSK, Serial, IPNET (IPNET includes Web Interface), and SNMPv2. If FSK is present on the IFL In port, all other communication on the M&C port will terminate. Upon removal of FSK, communication on the M&C port will resume.